



VOLUNTEER HANDBOOK 2018-2019

TABLE OF CONTENTS

TABLE OF CONTENTS.....	2
ABOUT US.....	4
FEED. TEACH. GROW.	4
MISSION	4
WHO WE SERVE	4
HOW WE SERVE	4
WHERE WE SERVE	5
OUR HISTORY	5
VOLUNTEER PROGRAM	5
VOLUNTEER HOURS OF OPERATION	6
SCHEDULING	6
ADDRESSES AND PARKING	7
VOLUNTEERS NEEDING DOCUMENTATION OF VOLUNTEER HOURS	8
COURT-ORDERED VOLUNTEERS	8
VOLUNTEER OPPORTUNITIES.....	8
AGRICULTURAL EXPERIENCES	9
FOOD SHUTTLE FARM.....	9
RALEIGH URBAN AGRICULTURE: CAMDEN ST. LEARNING GARDEN.....	9
DURHAM URBAN AGRICULTURE: GEER ST. GARDEN	9
FOOD RECOVERY & DISTRIBUTION EXPERIENCES	10
BACKPACK BUDDIES	10
DRIVERS & DRIVER ASSISTANTS	10
FOOD DRIVE SORTING.....	11
IN THE WAREHOUSE	11
COMMUNITY HEALTH EDUCATION EXPERIENCES	11
COOKING MATTERS	11
COOKING MATTERS AT THE STORE.....	12
GROCERY BAGS FOR SENIORS.....	12
MOBILE TASTINESS MACHINE	12
URBAN AGRICULTURE EDUCATION EXPERIENCES	12
GROWING SCHOOL GARDENS	12

ADMINISTRATIVE EXPERIENCES.....	13
PHONE CULTIVATOR AND DATA ENTRY	13
SPECIAL EVENTS.....	13
SPECIAL EVENTS/ FOOD SHUTTLE AMBASSADOR	13
SKILLED LABOR.....	13
CONSTRUCTION/HANDY PROJECTS	13
SPANISH TRANSLATORS	14
VOLUNTEER BILL OF RIGHTS	14
GENERAL GUIDELINES & PROCEDURES.....	14
CHECK-IN.....	14
DRESS CODE.....	14
SMOKING AREA.....	15
IMPORTANT POLICIES.....	15
YOUTH POLICY.....	15
ABSENT POLICY.....	15
INCLEMENT WEATHER POLICY.....	15
ANTI-HARASSMENT POLICY.....	16
FOOD POLICY.....	17
VOLUNTEER DISMISSAL POLICY.....	17
CONTACT US	18

ABOUT US

FEED. TEACH. GROW.

The Food Shuttle recovers and distribute 6 million pounds of food per year, and teaches skills for self-sufficiency including culinary job skills, shopping and cooking healthy on a budget, and how to grow food.



MISSION

Inter-Faith Food Shuttle pioneers innovative, transformative solutions designed to end hunger in our community.

WHO WE SERVE

North Carolina is the 8th hungriest state in the U.S. In our seven service counties, more than 260,000 people are food insecure and may not know where their next meal is coming from.

We believe **HUNGER IS UNACCEPTABLE!** On a deeper level, we believe the solutions to hunger are found in building a community food system that supports all of its residents with knowledge, skills, and access to healthy eating.

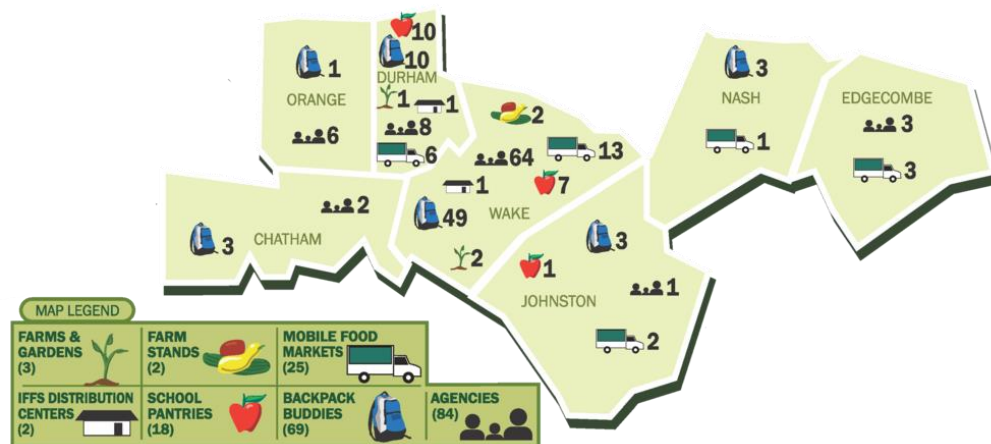
HOW WE SERVE

All of our programs seek to support low-income families living in food deserts without adequate access to nutritious food and without the income to purchase healthy meals. By partnering with churches and community housing, almost 7,000

people in low-income neighborhoods shop for free at 25 Mobile Markets right where they live. Volunteers deliver bags of fresh produce, some grown on our own farm, to almost 2,000 seniors. Almost 5,000 children receive nutritious meals through Backpack Buddies, School Pantries, and our food truck. All told, by partnering with 200 agencies, schools and community centers, almost 60,000 adults and children struggling with hunger receive healthy food on average every month. Additionally, more than 5,000 individuals participate in our cooking and gardening programs, strengthening their self-sufficiency, increasing their consumption of fresh produce, and becoming more food literate.

WHERE WE SERVE

The Food Shuttle operates in a seven county service area in central North Carolina, including: Wake, Durham, Johnston, Orange, Chatham, Nash, and Edgecombe counties.



OUR HISTORY

In 1989, co-founders Jill Staton Bullard and Maxine Solomon had a light bulb moment. One routine morning, they noticed that fast-food breakfast sandwiches were being thrown away simply because the clock had moved from “breakfast time” to “lunch time.” They knew the need was out there and had to take action. Eleven sandwiches were delivered to Shepherd's table that same day, providing nourishment to 44 patrons. The groundwork for the Inter-Faith Food Shuttle was born.

VOLUNTEER PROGRAM

VOLUNTEER HOURS OF OPERATION

Food Shuttle Raleigh Warehouse is open

Monday – Friday: 8 AM – 4 PM

Saturday: 8 AM – 2 PM

Food Shuttle Durham Warehouse is open

Monday – Friday: 8:30 AM – 4 PM

Food Shuttle Farm is open

Tuesday – Friday: 9 AM – 12 PM or 1 PM – 3:30 PM

One Saturday per month on an as needed basis

Camden St. Learning Garden is open

Tuesday – Saturday: 9 AM – 12 PM or 1 PM – 4 PM

Geer St. Learning Garden is open

Monday – Friday: 9 AM – 12 PM or 1 PM – 4 PM

2018 Holidays Closing Schedule:

Monday - January 1, 2018 (New Year's Day)

Saturday – January 13, 2018 (MLK Day of Service)

Monday – January 15, 2018 (MLK Day of Service)

Saturday – March 31, 2018 (5th Saturday of the month)

Saturday – May 26, 2018 (Memorial Day)

Monday – May 28, 2018 (Memorial Day)

Wednesday – July 4, 2018 (Independence Day)

Saturday – September 1, 2018 (Labor Day)

Monday – September 3, 2018 (Labor Day)

Thursday – November 22, 2018 (Thanksgiving)

Friday – November 23, 2018 (Thanksgiving)

Saturday – November 24, 2018 (Thanksgiving)

Monday – December 24, 2018 (Christmas)

Tuesday – December 25, 2018 (Christmas)

Tuesday – January 1, 2019 (New Year's Day)

SCHEDULING

All volunteers must schedule their volunteer experience and complete their volunteer waiver in advance by utilizing [VolunteerMatrix](#), our online scheduling software. ALL volunteers must have signed the electronic waiver form prior to volunteering. Children under 18 must have waiver signed electronically by a parent or guardian.

1. Create a volunteer profile and sign the electronic waiver, <https://foodshuttle.volunteermatrix.com/>.

2. Review the calendar for volunteer opportunities.
3. If looking for group opportunities, make sure to select the “Scheduling My Group” button at the top of the calendar to see group only opportunities.
4. Schedule yourself or group to volunteer.

Notes:

- Please note that weekend volunteer slots are limited and fill up quickly (sometimes two to three months in advance).
- No one under the influence of drugs and/or alcohol will be permitted to volunteer.
- Shifts with access codes already have scheduled volunteers. The access code allows organizations/groups to distribute the code to individual members of the group for ease of sign up for members.
- Questions/issues: Call our Volunteer Services department to help you. Refer to contact us page of the handbook.

ADDRESSES AND PARKING

Food Shuttle Raleigh Warehouse (1001 Blair Dr., Raleigh):

Volunteers may park to the right of the Vernon Malone building or in front of the Vernon Malone building. Parking to the left of the Vernon Malone building is reserved for Meals on Wheels of Wake County staff and volunteers. All volunteers must enter through the front door of the building.

Food Shuttle Durham Warehouse (2700 Angier Avenue, Durham):

We are temporarily sharing space with the Food Bank of Central and Eastern (FBCENC) until we find our own warehouse in Durham. Volunteers should park to the right of the FBCENC building along the fence. There is limited parking, so we do encourage carpooling.

Food Shuttle Farm (2300 Dover Farm Rd., Raleigh):

Volunteers may park along the tree line next to the Port-a-John. There is limited parking, so we do encourage carpooling for group volunteer experiences.

Camden St. Learning Garden (811 East Davie St., Raleigh):

Volunteers should turn into the gravel drive beside Revolution Missionary Baptist Church and park in the gravel lot that leads to the garden.

Geer St. Learning Garden (110 E. Geer St., Durham):

Volunteers may park along Roxboro Street and walk to the garden. Parking is extremely limited, so please carpool. Volunteers may also park across the

street in the grassy field in front of the bee hives. Volunteers are not allowed to park behind Reinvestment Partners or in the Sunrise Recovery Center parking lot. Those lots are designated for their clients.

In instances of special offsite volunteer events, parking instructions will be given to you.

VOLUNTEERS NEEDING DOCUMENTATION OF VOLUNTEER HOURS

Volunteers who need documentation of hours for school requirements are responsible for maintaining a record of their volunteer hours. Generic time sheets are offered to those who need them. Please give the Volunteer Manager 48-hours' notice for your documentation letter.

COURT-ORDERED VOLUNTEERS

The Inter-Faith Food Shuttle will accept volunteers performing court-ordered or lawyer recommended community service. Volunteers who are performing this type of community service must disclose the nature of their conviction to the Volunteer Manager or any other staff member of the Food Shuttle. The Food Shuttle will not accept volunteers who have been convicted of violent crimes, crimes of a sexual nature, or identity theft crimes. Volunteers with this program may only volunteer in the Raleigh Warehouse or on our Food Recovery & Distribution Routes. The Food Shuttle reserves the right to decline any volunteer or to limit which days or hours a volunteer can work. All court ordered volunteers must sign the "HACCP Training for Community Service and Volunteer Workers", "Community Service Rules", and the "IFFS Sexual Harassment Policy" prior to beginning assigned tasks. The Food Shuttle also reserves the right to dismiss a volunteer at any time during their scheduled time. Court ordered volunteers are responsible for tracking their own hours. Generic time sheets are offered to those who need them. Court-ordered individuals are expected to use the time clock in the warehouse to capture all hours. Please give the Volunteer Manager 48-hours' notice for your documentation letter.

VOLUNTEER OPPORTUNITIES

AGRICULTURAL EXPERIENCES

FOOD SHUTTLE FARM

Get your hands dirty and volunteer on our teaching farm in Raleigh! Learn about sustainable agriculture and connect to where your food comes from. Help us with soil preparation, planting, harvesting, weeding, composting, mulching, and working with the chickens and goats. Below are ways you can get involved.

Volunteer Groups: If you're part of a group, organization or business, the Inter-Faith Food Shuttle offers hands-on, team building, on-farm experiences for groups.

Days & Times: Tuesday – Friday from 9 AM – 12 PM or 1 PM – 3:30 PM

Group Size: 5-40 Volunteers

Age Restrictions: Volunteers must be at least 15 years old with adult supervision.

Youth Groups: Please refer to our youth policy for required youth to chaperone ratios.

**Preschool and elementary school groups are not able to volunteer on the farm. **

Individuals: Help us grow 20,000 plus pounds of food annually to support our distribution programs and services.

Days & Time: Tuesday – Friday from 9 AM – 12 PM or 1 PM – 3:30 PM

Age Restrictions: Volunteers must be at least 15 years old with adult supervision.

To schedule your volunteer experience with the Farm, please go to our volunteer website, <https://foodshuttle.volunteermatrix.com> or email, catygray@foodshuttle.org for more information.

RALEIGH URBAN AGRICULTURE: CAMDEN ST. LEARNING GARDEN

We have group and individual opportunities for volunteers at our Camden St. Learning Garden in Raleigh to assist us with weeding, planting, harvesting, and watering. Shift schedules vary by season. To schedule your volunteer experience with the garden, please go to our volunteer website, <https://foodshuttle.volunteermatrix.com> or email, catygray@foodshuttle.org for more information.

DURHAM URBAN AGRICULTURE: GEER ST. GARDEN

Volunteers are needed year-round at our Geer St. Garden downtown Durham. Projects vary seasonally and could include weeding, planting, mulching, and other gardening tasks. To schedule your volunteer experience with the garden,

please go to our volunteer website, <https://foodshuttle.volunteermatrix.com> or email, catygray@foodshuttle.org for more information.

FOOD RECOVERY & DISTRIBUTION EXPERIENCES

BACKPACK BUDDIES

Help us provide food to over 2300 food insecure children every week, so they have food over the weekend when they are not in school receiving the federal free/reduced breakfast and lunch.

Group Opportunities: We offer group opportunities in Raleigh and Durham. Volunteering consists of visiting one of our warehouse locations to pack bags of food for local school children.

Raleigh Warehouse: 1 hour shifts Monday – Wednesday between 9 AM-4 PM

Durham Warehouse: 1 hour shifts

Individual Opportunities: Individual volunteers help us deliver the Backpack Buddies to our 77 school partners in our seven county service area. This opportunity does require volunteers use their own vehicles to pick up bags from one of our warehouse locations and deliver them to a school partner.

To schedule your volunteer experience with Backpack Buddies, please go to our volunteer website, <https://foodshuttle.volunteermatrix.com> or email, Abbey.Riesett@foodshuttle.org for more information.

DRIVERS & DRIVER ASSISTANTS

The Inter-Faith Food Shuttle has Food Recovery and Distribution Routes Monday – Friday to recover 6 million pounds of food annually. To carry out this important work, we need volunteer Drivers and Driver Assistants on our weekly truck routes. As a Driver or Driver Assistant, you would be expected to volunteer once per week on a specific route to perform pick-up and drop-off activities using an IFFS truck. You would be expected to arrive at the Raleigh Warehouse by 7:50 AM on your chosen day to begin your shift.

Age Requirements: Drivers must be 21 years of age. Driver Assistants must be at least 14 years old and accompanied by an adult unless volunteer is 18 years old.

Orientation: Volunteers are required to participate in an in-person orientation and complete a ride along training. Additionally, drivers are required to pass a driving test with our Warehouse Manager and be approved by our insurance company.

To schedule your volunteer orientation for our Food Recovery and Distribution routes, please email, Abbey.Riesett@foodshuttle.org.

FOOD DRIVE SORTING

Volunteers help sort through food drive donations in both our Raleigh and Durham Warehouse. Sorting food drive donations involves checking donated food items for dents and expiration dates, allocating food towards various Food Shuttle programs, and categorizing food within those programs. Groups of up to 8 people or individuals may participate. Volunteers must be at least 8 years old to participate. Opportunities are dependent upon there being food drive donations in the warehouse.

To schedule your volunteer experience with Food Drive sorting or host a food drive, please go to our volunteer website, <https://foodshuttle.volunteermatrix.com> or email, Abbey.Riesett@foodshuttle.org for more information.

IN THE WAREHOUSE

We welcome individuals to become “Warehouse Warriors” and assist operations at our Raleigh Warehouse Monday-Friday from 10 AM – 2 PM. As a Warehouse Warrior, volunteers help keep us organized and clean. The Warehouse Manager directs volunteers on the day’s most important tasks like cleaning crates, washing shelving units, washing fleet vehicles, gleaning through bad produce, consolidating pallets, etc. However, if planning to volunteer regularly, a Warehouse Warrior may be assigned a specific task that may or may not take place at another time of the day.

To schedule your volunteer experience as a Warehouse Warrior, please go to our volunteer website, <https://foodshuttle.volunteermatrix.com> or email, Abbey.Riesett@foodshuttle.org for more information.

COMMUNITY HEALTH EDUCATION EXPERIENCES

COOKING MATTERS

Nutrition professionals, culinary professionals, and students, as well as nutrition-savvy individuals, are needed to teach and assist our 6-week Cooking Matters culinary and nutrition education classes. We offer classes for low-income people of all demographics through evidence based curricula. The classes meet for 2 hours every week for 6 weeks at multiple locations across the triangle. To [learn more](#)

about this program or to attend an orientation, email cookingmatters@foodshuttle.org.

COOKING MATTERS AT THE STORE

Volunteers interested in nutrition are needed to facilitate and assist with 90 minute guided grocery store tours teaching low-income participants how to shop healthy while sticking to a budget. The tour compares fresh, frozen, versus canned produce options and many other tips. The tour includes an optional \$10 challenge for participants. To [learn more](#) about this program or to attend an orientation, email cm.outreach@foodshuttle.org.

GROCERY BAGS FOR SENIORS

We have group opportunities available in Raleigh with our Grocery Bags for Seniors program. In this program, volunteer groups come to our Raleigh Warehouse to pack bags of produce and then deliver the bags they've packed to a local housing community. Groups volunteering with the Grocery Bags program *must have transportation* to get to our headquarters and to deliver their packed bags to a location in Raleigh. The location and driving instructions will be provided to the group upon arrival for the shift. Shifts are scheduled on Thursday-Saturday in 2 hour increments. To schedule your volunteer experience, please go to our volunteer website, <https://foodshuttle.volunteermatrix.com>.

MOBILE TASTINESS MACHINE

Individual volunteers are needed to help us distribute free food to kids and teens in 4 low-income Wake County neighborhoods from April - October. The Mobile Tastiness Machine is our version of a food truck. Volunteers help drive the food truck and distribute meals. To schedule your volunteer experience, please email Abbey.Riesett@foodshuttle.org.

URBAN AGRICULTURE EDUCATION EXPERIENCES

GROWING SCHOOL GARDENS

Volunteers help the Food Shuttle build elementary school gardens in Durham and Wake Counties. We have 2-3 garden builds a year happening at various times throughout the year. To see opportunities and schedule your volunteer experience, please go to our volunteer website, <https://foodshuttle.volunteermatrix.com>.

SPROUT SCOUTS

Volunteers teach and assist elementary school children (3rd-5th grade) about gardening through an afterschool gardening club. Gardening clubs meet for 10 weeks with the same students in 3-4 hour shifts. Opportunities vary based on schools. To see opportunities and schedule your volunteer experience, please go to our volunteer website, <https://foodshuttle.volunteermatrix.com>.

SEED TO SUPPER

Volunteers teach and assist with adult gardening education programs in Durham. Opportunity dates vary based on community partner site, but classes usually meet for 10 weeks for 3-4 hours each week. To see opportunities and schedule your volunteer experience, please go to our volunteer website, <https://foodshuttle.volunteermatrix.com>.

ADMINISTRATIVE EXPERIENCES

PHONE CULTIVATOR AND DATA ENTRY

We are looking for individual volunteers who want to be “Front Desk Attendants” who answer and direct calls and who perform basic filing and data entry tasks. “Front Desk Attendants” are essential to operations and are needed to volunteer on a regular basis on weekdays from either 8 AM – 12 PM or 12 PM – 4 PM. If you are interested in helping at the Front Desk, please email Abbey.Riesett@foodshuttle.org.

SPECIAL EVENTS

SPECIAL EVENTS/ FOOD SHUTTLE AMBASSADOR

From time to time, we have one-time or short-term, specific opportunities for volunteers. Specific opportunities do include speaking events on behalf of IFFS. Your name will also be added to our special events interests list and you will receive emails throughout the year informing you about upcoming events. To learn more, please email Abbey.Riesett@foodshuttle.org.

SKILLED LABOR

CONSTRUCTION/HANDY PROJECTS

Throughout the year we have special infrastructure projects at our agricultural sites where we can use volunteers who have experience building things. Previous projects include building high tunnels, building greenhouses, building sheds, building garden beds, and more. If you have this skillset and would like to volunteer your insights, please email Abbey.Riesett@foodshuttle.org.

SPANISH TRANSLATORS

We are always looking for Spanish translators to help run our Community Health Education and Urban Agriculture Education programs. If you are interested in helping with our programs and can offer your skillset, please email Abbey.Riesett@foodshuttle.org.

VOLUNTEER BILL OF RIGHTS

1. The right to feel safe.
2. The right to feel valued.
3. The right to information about your volunteer role or project.
4. The right to thoroughly planned and effectively presented volunteer job training.
5. The right to know as much about the organization as possible, including its policies, staff and programs.
6. The right to continued education and information about new developments and opportunities.
7. The right to an orderly designated place to work.
8. The right to be heard, to have a part in planning, to feel free to make suggestions and to have respect shown for an honest opinion.

GENERAL GUIDELINES & PROCEDURES

CHECK-IN

Upon arriving to volunteer, volunteers are required to check-in with the appropriate staff member to clock-in for their volunteer shift. Volunteers will receive a name tag at this time.

DRESS CODE

Volunteers should dress casually and wear comfortable, closed toe shoes such as sneakers, work shoes, or boots. Volunteer work sometimes gets messy! During the warm months, all volunteers must wear sleeved shirts (no tank tops); no sandals/flip flops allowed.

Please leave personal belongings at home or locked in your car. Necklaces and long earrings pose a safety concern; please remove if necessary. The Food Shuttle will not be responsible for any missing personal belongings.

Volunteers are encouraged to bring a water bottle with them when they come to volunteer. Hydration is important especially in the summer months.

SMOKING AREA

We have designated smoking areas at our locations. Please ask the staff member supervising your experience where the designated smoking area is.

IMPORTANT POLICIES

YOUTH POLICY

The Inter-Faith Food Shuttle believes that involving youth is paramount to our mission of ending hunger. However, we must provide a safe and productive work environment for our volunteers. Therefore, the restrictions below must be adhered to when minors (those less than 18 years of age) are volunteering on the behalf of the Inter-Faith Food Shuttle.

- All youth (17 and under) must be accompanied by an adult over the age of 18.
- The minimum age for general warehouse projects and on Farms & Gardens is 11. Kids 5-10 can help in the warehouse and on the farm/gardens on designated family days.
- You must be 14 to ride on a truck.
- All community service volunteers must be 18.
- **Groups with youth** must have chaperones over the age of 18. Chaperones per youth requirements based on age are:
 - 5-8 years old: 1 chaperone for every 3 volunteers
 - 9-15 years old: 1 chaperone for every 5 volunteers
 - 16-17 years old: 1 chaperone for every 10 volunteers

ABSENT POLICY

In the event that you will not be able to make your scheduled volunteer time please contact the Volunteer Manager via phone call, (919)390-1968 or email, Abbey.Riesett@foodshuttle.org.

INCLEMENT WEATHER POLICY

The Inter-Faith Food Shuttle usually follows the Wake County Public School's closings and delays. Volunteers will be notified the evening before if we close operations and cancel volunteer experiences. No volunteers or staff may drive Food Shuttle vehicles or be on site without express permission from the Executive

Director. Please check the www.foodshuttle.org and social media for current updates.

ANTI-HARASSMENT POLICY

The Inter-Faith Food Shuttle is committed to maintaining a work environment that is free of harassment. Harassment of any kind is prohibited.

We define sexual harassment as unwelcome sexual advances, requests for sexual favors and other verbal or physical conduct of a sexual nature that adversely affects any individual or creates an intimidating, hostile or offensive working environment. No employee, volunteer, member of management or community service volunteer, up to, and including the Executive Director, has the right or authority to offer any benefits, including, but not limited to tangible items, whether business-related or non-business related, in exchange for sexual favors.

Harassing conduct includes, but is not limited to, the following:

- Epithets, slurs, negative stereotyping, or threatening, intimidating or hostile acts that are related to race, color, religion, gender, national origin, age, or disability;
- Written or graphic material that denigrates or shows hostility or aversion toward an individual or group because of race, color, religion, gender, national origin, age, or disability, and that is placed or found on walls, bulletin boards, desks, computers (screens, emails, etc.) or elsewhere on the Food Shuttle premises or in the workplace.

If you experience or observe conduct which you consider to be a violation of this policy, you must inform the Volunteer Manager, or Human Resources staff. The Food Shuttle will immediately investigate any allegation of harassment and will take prompt and remedial action to remedy the situation. As far as possible, the confidentiality of both the complaining party and the alleged harasser will be protected during this process. After the process the complaining party will be informed of the outcome of the investigation and have an opportunity to discuss future procedures.

If the investigation reveals that an employee, volunteer, manager, community service volunteer, or the Executive Director is guilty of sexual harassment, the offending person will be disciplined appropriately, up to and including dismissal from the Food Shuttle. In addition, anyone who makes false and/or misleading statements regarding sexual harassment will also face dismissal.

FOOD POLICY

All donated product (food, beverage, and otherwise) is to be used solely for the intended purpose of serving food recipients through appropriate Inter-Faith Food Shuttle (IFFS) channels (direct distribution, partner agency distribution, and kitchen programming). Staff and volunteers are prohibited from using any and all donated product for personal consumption. Any violation of this policy will result in immediate termination or removal from volunteer duties.

The Inter-Faith Food Shuttle is a non-profit, 501(c)3 organization that receives donated products in accordance with IRS Code 170(e)(3), which defines the tax deduction that donors are eligible to receive if the donation is used according to the regulations, defines the organizations eligible to receive those donations, and defines allowable uses of those donations. All donated product (food, beverages, and otherwise) is to be used solely for the care of the ill, needy, or infants. All products donated to IFFS are considered as having been donated under the provisions of Section 170(e)(3) of the U.S. Internal Revenue Code, unless the donor clearly provides verification to the contrary in writing.

The IFFS is committed to keeping high standards in regards to use of donated product. We have a commitment and accountability to the people that we serve and to our donors, who make this work possible. Our community has bestowed a great amount of trust and good-faith in our work and mission. Furthermore, personal consumption of food and beverages is not a benefit of employment or perk of volunteering.

VOLUNTEER DISMISSAL POLICY

Volunteers are an invaluable resource to IFFS and our primary aim is to encourage and support their contribution to ending hunger. However, it is also recognized that there may be times when a volunteer needs to be counselled and perhaps dismissed.

Volunteers may voluntarily leave the organization at any time and may be asked to leave the organization at any time. Volunteers who do not adhere to the policies and procedures outlined below are subject to dismissal.

Conduct that IFFS finds unacceptable:

- Consistent failure to be on time or “no showing” for a shift.
- Unable to commit to the time requirement that was set forth in the position description.
- Inability to comply with any of the standards presented herein; including performance standards, policies, and guidelines found within the Volunteer Handbook.
- Failure to comply with staff decisions.

- Failure to be respectful to recipients, visitors, donors, volunteers and staff.
- Distributing confidential information about recipients, volunteers or staff.
- Use of the IFFS name or trademarks, without prior permission from the Director of Marketing, Communications.

Steps taken by IFFS to enforce outlined policies:

1. The first infraction of above policies will result in the staff member involved verbally addressing situation with volunteer along with notifying the Volunteer Manager. The infraction will then be documented in the volunteer file.
2. In the event of a second infraction, the volunteer will meet with the program staff member involved and the Volunteer Manager. At this meeting, the volunteer will be asked to sign a probationary letter that will explain infraction and outline any action steps.
3. In the event that a third infraction takes place, the volunteer will be asked to immediately relinquish their position as a volunteer with the Inter-Faith Food Shuttle.

Conduct that permits immediate release of Volunteer:

The following is a list of inappropriate conduct that will result in the immediate cancellation of volunteer status. Even if a staff member does not personally see the below infractions take place, if reasonable belief exists that the infraction occurred it will result in immediate release of volunteer. Examples cannot be listed to cover every situation. Other offenses may be deemed serious that are not specifically mentioned here.

- Falsifying reports, records or expense
- Sexual Harassment
- Physical or Verbal harassment
- Negligent or willful damage of property
- Theft
- Unlawful discrimination
- Illegal or unethical behavior
- Negligent or willful endangerment of the safety of others
- Working while impaired by intoxicants- alcohol or drugs
- Insubordination
- Breach of conflict of interest

CONTACT US

Inter-Faith Food Shuttle

1001 Blair Drive

Suite 120

Raleigh, NC 27603

Office: (919) 250-0043

Fax: (919) 250-0416

www.foodshuttle.org

Volunteer Manager

Abbey Riesett

Office: (919) 390-1968

Email: Abbey.Riesett@foodshuttle.org

Volunteer Coordinator

Food Shuttle Farm, Urban Gardens,
and Urban Agriculture Education
Programs

Caty Gray Urquhart

Office: (919) 390-1974

Email: CatyGray@foodshuttle.org